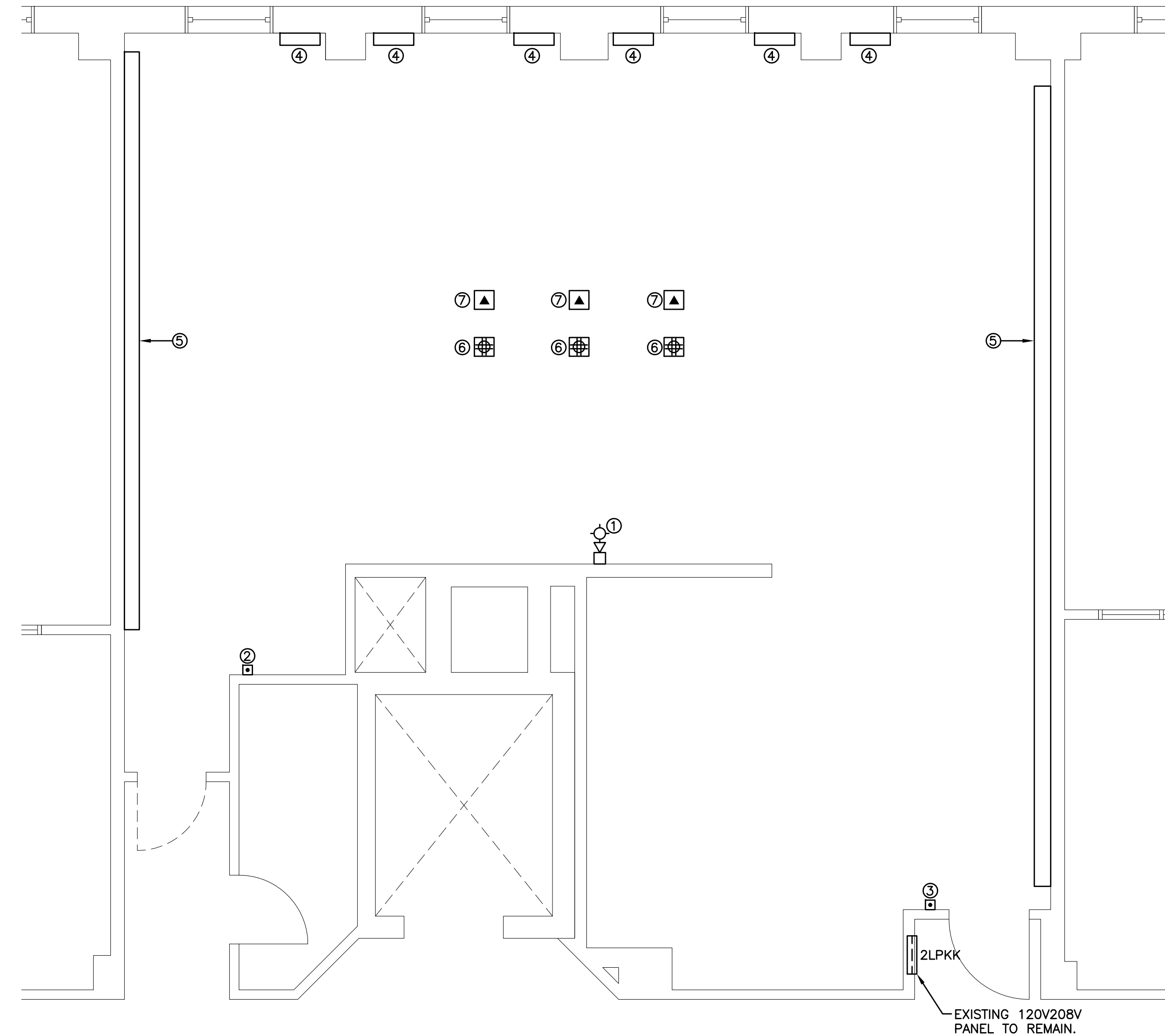


NEW FLOOR PLAN – POWER
SCALE: 1/4"=1'-0"

NEW WORK POWER REFERENCE NOTES:

- ① EXISTING FIRE ALARM HORN/STROBE.
- ② FOR VIDEO RACK. VERIFY LOCATION.
- ③ CEILING MOUNTED FOR PROJECTOR. VERIFY LOCATION.
- ④ RELOCATED SECTION OF 2-CHANNEL RACEWAY. MATCH MOUNTING HEIGHT OF EXISTING. CUT TO FIT AS REQUIRED AND PROVIDE ALL ADDITIONAL HARDWARE AND ACCESSORIES (AND PLATES, BLANK COVERS, ETC.) AS REQUIRED FOR A FINISHED INSTALLATION. RELOCATE ALL EXISTING DATA/COMM CABLES & RE-CONNECT TO EXISTING RACEWAY MOUNTED DEVICES.
- ⑤ EXTEND 2-CHANNEL RACEWAY TO CLG FOR ROOM & DATA DROPS.
- ⑥ PROVIDE J-BOX IN WALL FOR POWER TO RACEWAY.
- ⑦ PROVIDE J-BOX IN WALL AND 1" CONDUIT STUB ABOVE CLG FOR DATA/COMM DROPS.



EXISTING FLOOR PLAN – POWER
SCALE: 1/4"=1'-0"

DEMOLITION POWER REFERENCE NOTES:

- ① FIRE ALARM HORN/STROBE TO REMAIN.
- ② REMOVE EMERGENCY "POWER SHUT OFF" PUSH BUTTON.
- ③ EMERGENCY "POWER SHUT OFF" PUSH BUTTON TO REMAIN.
- ④ REMOVE 2-CHANNEL RACEWAY SECTION. PROVIDE BLANK COVER OVER POWER FEED. PROVIDE BLANK COVER OVER DATA/COMM FEED.
- ⑤ REMOVE 2-CHANNEL RACEWAY SYSTEM. RELOCATE TO NEW CLASSROOM 230C. EXTEND EXISTING BRANCH CIRCUITS AND DATA/COMM CABLES TO NEW LOCATIONS. SEE RENOVATED FLOOR PLAN.
- ⑥ REMOVE RECEPTACLE AND BRANCH CIRCUIT WIRING FROM FLOOR BOX. BOX TO BE ABANDONED.
- ⑦ REMOVE DATA/COMM DEVICE AND CABLING FROM FLOOR BOX. BOX TO BE ABANDONED.